



## Easy Chess Puzzle # 0138

By

G Bud Games  
<https://gbud.in>

February 15, 2022

## Contents

<b>Easy Chess puzzle # 0138 - Gain opponent's queen through a fork</b>	<b>3</b>
Easy chess puzzle 0138 . . . . .	3
Solution to easy chess puzzle 0138 . . . . .	4
Solution 1 . . . . .	4
Right moves for the solution to the easy chess puzzle 0138	7
Explanation for the moves . . . . .	7
Categories of easy chess puzzle 0138 . . . . .	7
easy chess puzzle 0138 chart . . . . .	8
How to view the solution to easy chess puzzle 0138 . . . . .	10
How to get help for moves in the easy chess puzzle 0138 . . . . .	11
Play chess for free . . . . .	12

## List of Figures

1	Solve this easy chess puzzle 0138. Gain opponent's queen through a fork @ <a href="https://gbud.in/gk2gnx1">https://gbud.in/gk2gnx1</a> . . . . .	3	
2	Solve this chess puzzle online with solution @ <a href="https://gbud.in/gk2gnx1">https://gbud.in/gk2gnx1</a> . . . . .	3	3
3	Initial board position of easy chess puzzle 0138 . . . . .	4	
4	g6 . . . . .	5	
5	Ng7+ . . . . .	5	
6	Kf8 . . . . .	6	
7	Nxe6+ . . . . .	6	
8	easy chess puzzle 138 chart 1 . . . . .	8	
9	easy chess puzzle 138 chart 2 . . . . .	9	
10	easy chess puzzle 138 chart 3 . . . . .	9	
11	easy chess puzzle 138 chart 4 . . . . .	10	
12	Click the solution button to view solutions @ <a href="https://gbud.in/gk2gnx1">https://gbud.in/gk2gnx1</a> . . . . .	10	
13	Click the help button to get help on next move @ <a href="https://gbud.in/gk2gnx1">https://gbud.in/gk2gnx1</a> . . . . .	11	
14	Solve more easy puzzles @ <a href="https://gbud.in/chsezpz">https://gbud.in/chsezpz</a> . . . . .	11	
15	Solve other puzzles @ <a href="https://gbud.in/chsgppz">https://gbud.in/chsgppz</a> . . . . .	11	
16	Play chess online for free. Solve puzzles and play with friends	12	
17	Solve this puzzle online by scanning this QR code or go to the link below . . . . .	13	

## Easy Chess puzzle # 0138 - Gain opponent's queen through a fork

Solve this easy chess puzzle and improve your chess games through improvement of your chess strategies and chess tactics.

Puzzle No : 0138

Difficulty level : Easy

Description : Gain opponent's queen through a fork

Next Move : White

Player level : Beginner

Short URL for puzzle : <https://gbud.in/gk2gnx1>

### Easy chess puzzle 0138

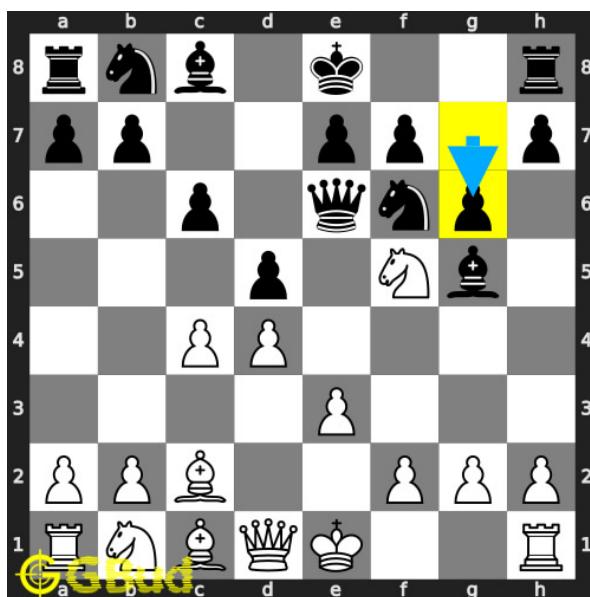


Figure 1: Solve this easy chess puzzle 0138. Gain opponent's queen through a fork @ <https://gbud.in/gk2gnx1>



Figure 2: Solve this chess puzzle online with solution @ <https://gbud.in/gk2gnx1>

Dont forget to check out [chess puzzles](#), [easy chess puzzles](#), [medium chess puzzles](#), [hard chess puzzles](#) and [chess puzzles collections](#) .

## Solution to easy chess puzzle 0138

At this puzzle, next [move](#) is by [White](#). The objective of the puzzle is to gain opponent's queen through a fork.

See the interactive solution at the [puzzle page](#)

### Solution 1

**Initial board position** This is the initial board position of easy chess puzzle 0138.

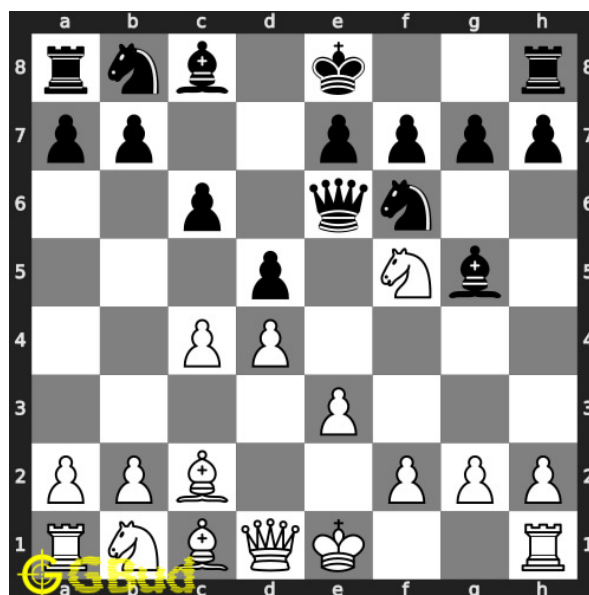


Figure 3: Initial board position of easy chess puzzle 0138

**Move 1** Move by black

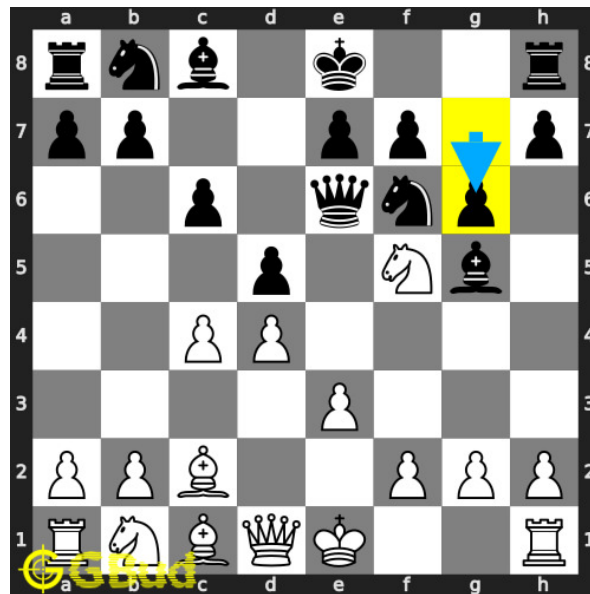


Figure 4: g6

opponent's **pawn** threatens your **knight**.

**Move 2** Move by white

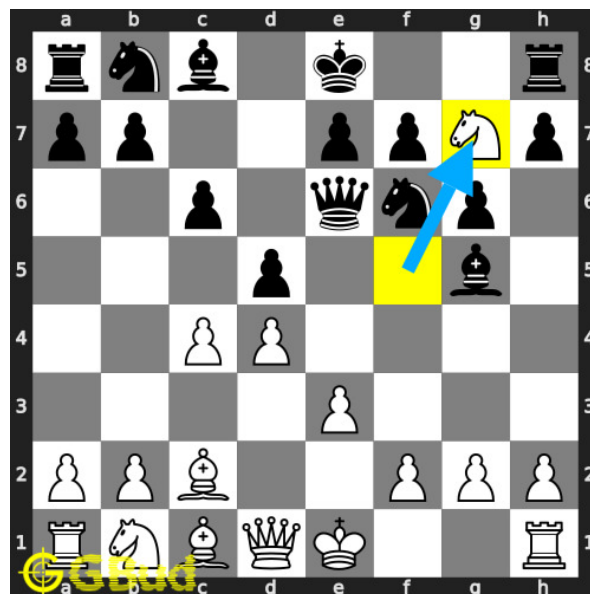


Figure 5: Ng7+

your **knight forks** opponent's **king** and **queen**.

**Move 3** Move by black

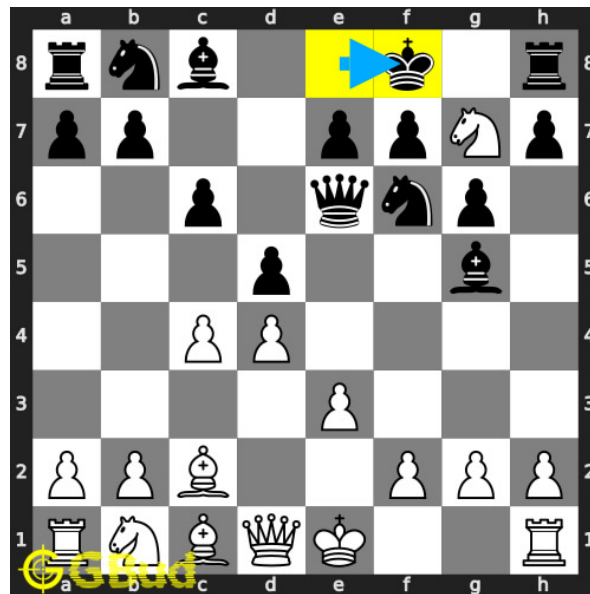


Figure 6: Kf8

opponent's king escapes from the check threat by moving to f8.

**Move 4** Move by white



Figure 7: Nxe6+

your knight captures opponents queen. this is how you can gain opponent's queen through a fork.

## Right moves for the solution to the easy chess puzzle 0138

Based on the objective of the puzzle, you have to make the right moves. Following are the right moves

1. Ng7+, Nxe6+

### Explanation for the moves

1. g6 - opponent's pawn threatens your knight.
2. Ng7+ - Your knight forks opponent's king and queen.
3. Kf8 - Opponent's king escapes from the check threat by moving to f8.
4. Nxe6+ - Your knight captures opponents queen. This is how you can gain opponent's queen through a fork.
5. For right move - You have gained the queen effectively through a fork. Good strategy
6. For wrong move - You missed a chance to capture the opponent's queen by your knight after a check. Try again

## Categories of easy chess puzzle 0138

This easy chess puzzle falls in these categories.

1. [Easy chess puzzles](#)
2. [Gain puzzles in chess](#)
3. [Fork puzzles in chess](#)
4. [Strategy puzzles in chess](#)
5. [Terminology puzzles in chess](#)
6. [Knight puzzles in chess](#)

## easy chess puzzle 0138 chart



Figure 8: easy chess puzzle 138 chart 1





Figure 9: easy chess puzzle 138 chart 2



Figure 10: easy chess puzzle 138 chart 3



Figure 11: easy chess puzzle 138 chart 4

## How to view the solution to easy chess puzzle 0138

To view the [solution to this puzzle](#), follow the steps given below

1. Go to the [puzzle page](#)
2. Click the solution button (Key as shown [below](#)) to view the solution



Figure 12: Click the solution button to view solutions @ <https://gbud.in/gk2gnx1>

## How to get help for moves in the easy chess puzzle 0138

To get help or the possible next moves in the puzzle, , follow the steps given below

1. Go to the [puzzle page](#)
2. Click the help button (exclamation mark as shown [below](#)) to get help or suggestion on next possible [move](#)



Figure 13: Click the help button to get help on next move @ <https://gbud.in/gk2gnx1>



Figure 14: Solve more easy puzzles @ <https://gbud.in/chsezpz>



Figure 15: Solve other puzzles @ <https://gbud.in/chsgppz>

## Play chess for free

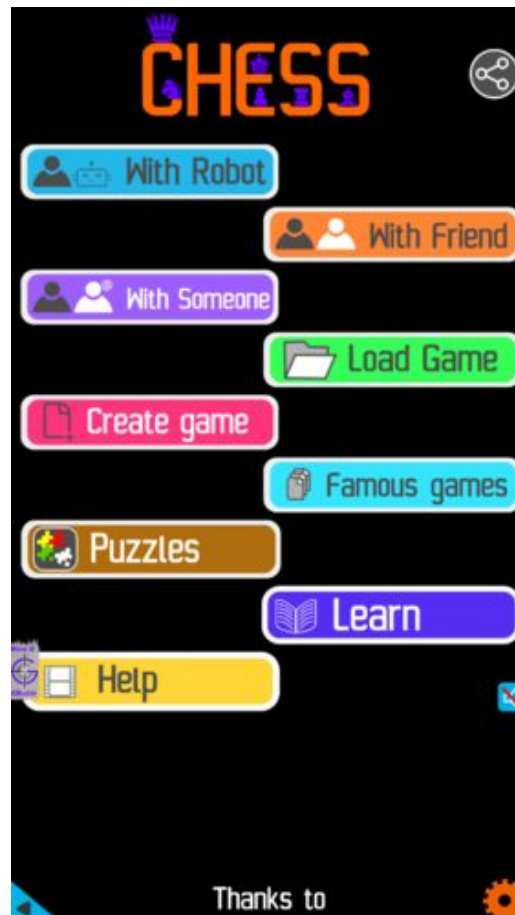


Figure 16: Play chess online for free. Solve puzzles and play with friends

Play chess for free at <https://gbud.in/chs>

We present you a platform to play chess online with friends for free. No need to install any app. You can play chess for free without registration or login.

Simple. You can do several chess related activities.

1. solve chess puzzles
2. learn about chess
3. play chess with computer
4. play chess with friend
5. create your own chess games

6. [fen viewer](#)
7. [fen editor](#)
8. [fen generator](#)
9. [pgn viewer](#)
10. [chess board editor](#)
11. [view famous chess games.](#)



Figure 17: Solve this puzzle online by scanning this QR code or go to the link below

<https://gbud.in/gk2gnx1>

Read the latest article on Easy Chess puzzle # 0138 - Gain opponent's queen through a fork by scanning this QR code or click the link

Previous article : « [Easy Chess puzzle # 0137 - Mate in 1 move](#)

Next article : [Easy chess puzzles](#) »

[Back to top](#)

[Contact Us](#)